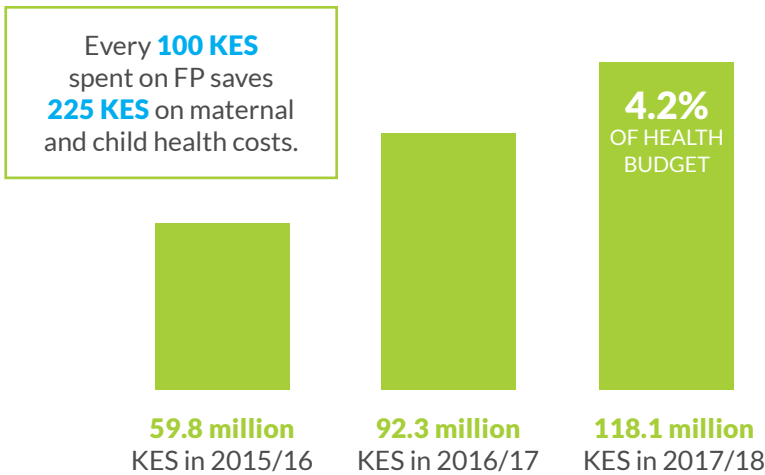


Funding Needed to Fully Implement Family Planning Services in:

KILIFI

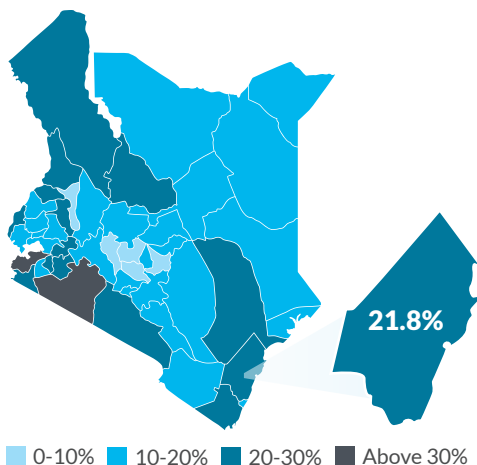
Family Planning (FP) Budget Allocations Have Increased but Remain Small Share of Health Budget



Is Kilifi Fulfilling Its FP2020 Commitment?

- ✗ Does Not Have FP Budget Line
- ✓ Costed Implementation Plan

Kilifi has a higher rate of teenage pregnancy than Kenya as a whole



Median age at first:



Providing adolescents with contraception can:

- Help young women stay in school.
- Support young women's economic development.
- Promote healthier planned pregnancies and births.

FP Programming in Kilifi Requires More Funds

Create a FP budget line to fund the CIP.

Leverage donor funds to support CIP implementation.

Dedicate specific funds for adolescent FP programming.

References

Guttmacher Institute, “Adding It Up: Investing in Contraception and Maternal and Newborn Health, 2017, Fact Sheet” (2017), accessed at www.guttmacher.org/sites/default/files/factsheet/adding-it-up-contraception-mnh-2017.pdf, on Oct. 1, 2017.

DSW, “Family Planning Budget Analysis in Kenya 2017,” (Nairobi, Kenya: DSW, 2017).

Kenya National Bureau of Statistics (KNBS), Ministry of Health (MOH), National AIDS Control Council (NACC), Kenya Medical Research Institute (KMRI), National Council for Population and Development (NCPD), and ICF International, Kenya Demographic and Health Survey (DHS) 2014 (Nairobi, Kenya: KNBS, MOH, NACC, KMRI, NCPD, and ICF International, 2014).

Kenya MOH, International Centre for Reproductive Health Kenya (ICRHK), NCPD, and KNBS, “PMA2016/Kenya-R5 Performance Monitoring and Accountability 2020: Key Family Planning Indicators,” (May 2017), accessed at <http://pma2020.org>, on Oct. 15, 2017.

Jacqueline E. Darroch et al., “Adding it Up: Costs and Benefits of Meeting the Contraceptive Needs of Adolescents,” (May 2016), accessed at www.guttmacher.org, on Oct. 1, 2017.

FIGURES

FP BUDGET ALLOCATIONS HAVE INCREASED BUT REMAIN SMALL SHARE OF HEALTH BUDGET
DSW, 2017.

PERCENT OF YOUNG WOMEN WHO HAVE BEGUN CHILDBEARING
Kenya DHS 2014.

MEDIAN AGE AT FIRST SEX, BIRTH, MARRIAGE, AND CONTRACEPTIVE USE
Kenya MOH, ICRHK, NCPD, and KNBS, 2017.